



Spafinder now has **2** different types of Gift Cards.

The **Single Use** Gift Card  
&

The **New Multi-Use** Gift Card

The following instructions will help you and your teams.

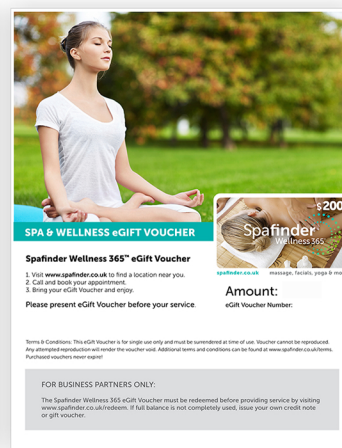
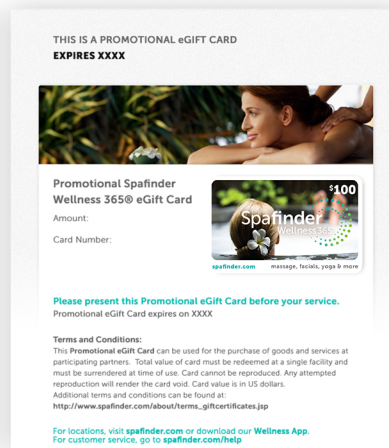
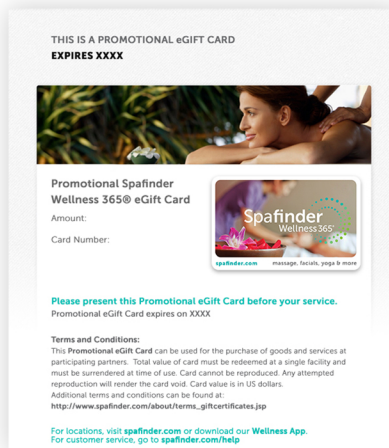
Please keep a copy in the Reception Area.

# SINGLE USE GIFT CARD REDEMPTION INSTRUCTIONS

## SPAFINDER WELLNESS 365® GIFT CARDS



## SPAFINDER WELLNESS 365® eGIFT CARDS



\*eGift Card face values and designs may vary by season, holiday, occasion or promotional partner program.

## REDEEM ONLINE

1. Visit: [www.spafinder.com/redeem](http://www.spafinder.com/redeem)
2. Login with your **User Name** and **Password**
3. Enter **Gift Card Number** and **Face Value** or **PIN**

## REDEEM BY PHONE

1. Call: **877.803.0684**
2. Enter your **Spafinder Account ID Number** or the **Telephone Number** associated with your Account
3. To redeem the Gift Card, **Press 1** OR For balance inquiry, **Press 2**.
4. Enter **Gift Card Number** and **Face Value** or **Pin**

or

## REDEEM ON MOBILE APP

1. **Download app** from iTunes Store or Android Market, Search **"SFW Partners"**
2. Login with your **User Name** and **Password**
3. Create a **4 digit Security Pin** that you'll enter
4. Choose card type and scan **Barcode** or enter **Gift Card Number** and **Value** or **Pin**
5. **Submit** to Validate/Check Balance and redeem Gift Card

Redemption transaction history will reside in the partner portal. Commission fee will be deducted from the payable amount. If the full balance is not completely used, issue your own store credit or gift certificate/card. If you need to review the balance on the card, visit [www.spafinder.com/balanceinquiry](http://www.spafinder.com/balanceinquiry) OR call our toll free line: **+1 (855) 521-1743**. Retain copies of redeemed Gift Cards for your records for at least six months. You may accept all forms of Spafinder Wellness 365® cards and certificates for accommodations, services, and products.

# SINGLE USE GIFT CARD REDEMPTION INSTRUCTIONS

## OTHER CURRENT VERSIONS

Wellness365 plastic card



Canadian variable denom plastic card



2014 Holiday plastic card



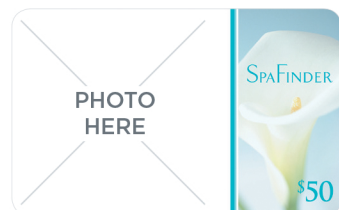
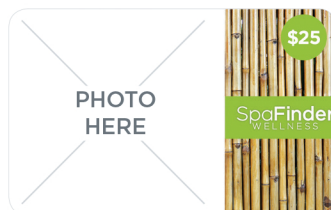
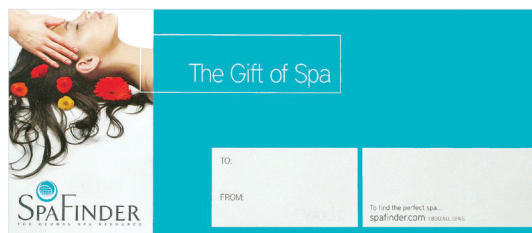
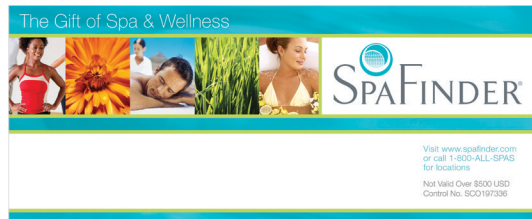
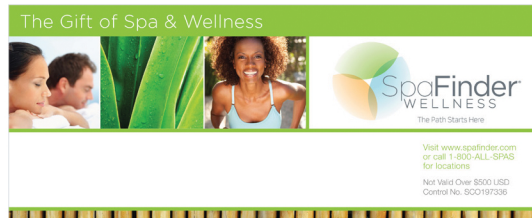
Promotional paper card



Paper gift certificate



## HISTORICAL VERSIONS





# MULTI-USE GIFT CARD REDEMPTION INSTRUCTIONS

## SPAFINDER MULTI-USE GIFT CARDS

SPAFINDER

## POINT OF SALE REDEMPTION

There is **NO NEED TO LOGIN** to the partner portal to redeem a multi-use gift card.

1. **Swipe or key in** the **Gift Card Number, CVV2** and **Valid Thru Date** through your point of sale (POS) system.

2. Depending on your system, enter the transaction amount.

3. Your POS will automatically debit the charge.

4. Return the card to the customer.

**5. Payment will be deposited into your account after 2 business days.**

Redemption transaction history will reside in the partner portal.  
Commission fee will be deducted from the payable amount.

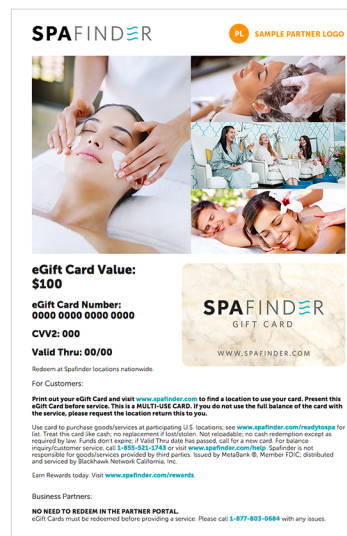
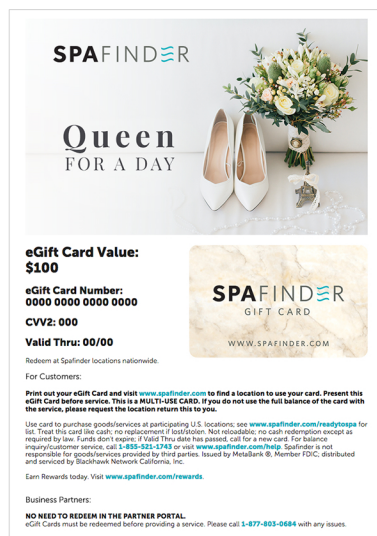
If you need to review the balance of the card, visit:

**www.spafinder.com/balanceinquiry**

or call toll free: **+1 (855) 521-1743**



## SPAFINDER MULTI-USE eGIFT CARDS



\*eGift Card  
face values  
and designs  
may vary  
by season,  
holiday,  
occasion or  
promotional  
partner  
program.